



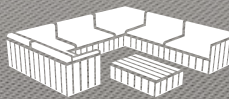
Creative Structures

PRICE LIST DECKING 2021

CREATIVE
STRUCTURES



CREATIVE
FURNITURE



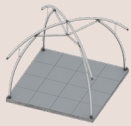
CREATIVE
DECKING



DECKING FOR LOUNGER M



SET | Decking for Lounger M



Decking frame with Square panels and baseboards

Excl. Lounger M Structure

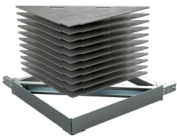
€ 5.325,00

Contents

17 m² frame 12 panels 4 panels 1x transportbox



Ballast



Optional ballast inside decking
In case of windforce 7 or higher, we advise to add ballast elements in the decking structure.

Set for Lounger M

8x ballast profile of 8 kg each
12x ballast plate of 28 kg each € 1.533,00

Total weight

399 kg

We advise to close the Creative Structure with sidewalls in the event of heavy winds.

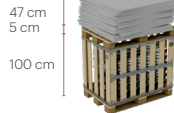
Transport packaging

Dimensions (LxWxH)

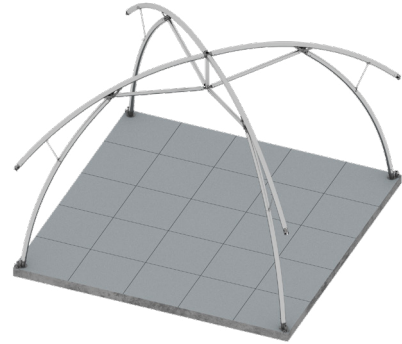
120x103x153 cm

Weight

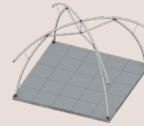
461 kg



DECKING FOR LOUNGER L



SET | Decking for Lounger L



Decking frame with Square panels and baseboards

Excl. Lounger L Structure

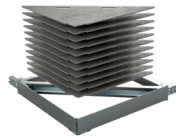
€ 7.533,00

Contents

26 m² frame 21 panels 4 panels 1x transportbox



Ballast



Optional ballast inside decking
In case of windforce 7 or higher, we advise to add ballast elements in the decking structure.

Set for Lounger L

8x ballast profile of 8 kg each
12x plate of 28 kg each € 1.533,00

Total weight

399 kg

We advise to close the Creative Structure with sidewalls in the event of heavy winds.

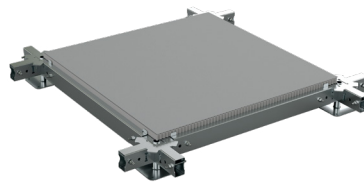
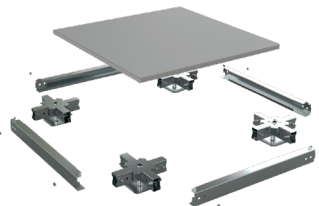
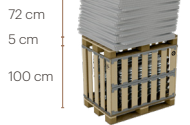
Transport packaging

Dimensions (LxWxH)

120x103x178 cm

Weight

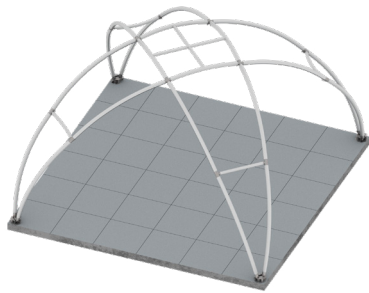
626 kg



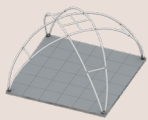
Structure Lounger excluded
Panels and baseboards can be full colour printed with your design.

Prices are in Euro and excluding VAT
Delivery – Ex Works Roosendaal The Netherlands
Payment conditions 50% by order and 50% before collection

DECKING FOR CROSSOVER M



SET | Decking for Crossover M



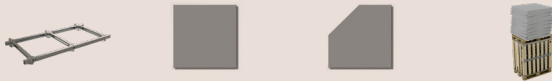
Decking frame with Square panels and baseboards

Excl. Crossover M Structure

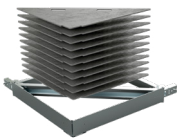
€ 10.199,00

Contents

38 m² frame 32 panels 4 panels 1x transportbox



Ballast



Optional ballast inside decking

Set for Crossover M

8x ballast profile of 8 kg each
12x ballast plate of 28 kg each

€ 1.533,00

Total weight

399 kg

We advise to close the Creative Structure with sidewalls in the event of heavy winds.

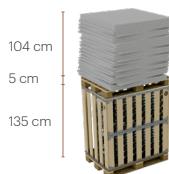
Transport packaging

Dimensions (LxWxH)

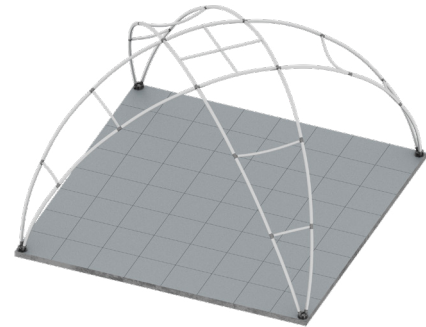
120x103x244 cm

Weight

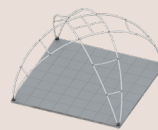
796 kg



DECKING FOR CROSSOVER L



SET | Decking for Crossover L



Decking frame with Square panels and baseboards

Excl. Crossover L Structure

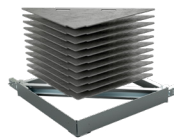
€ 17.235,00

Contents

68 m² frame 60 panels 4 panels 2x transportbox



Ballast



Optional ballast inside decking

Set for Crossover L

8x ballast profile of 8 kg each
32x ballast plate of 28 kg each

€ 3.494,00

Total weight

959 kg

We advise to close the Creative Structure with sidewalls in the event of heavy winds.

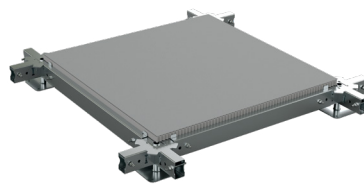
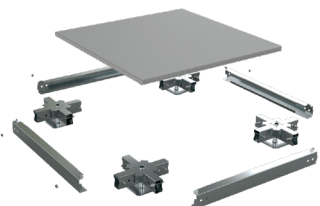
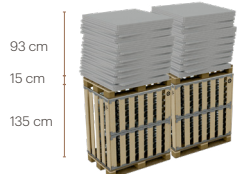
Transport packaging

Dimensions (LxWxH)

2x 120x103x243 cm

Weight

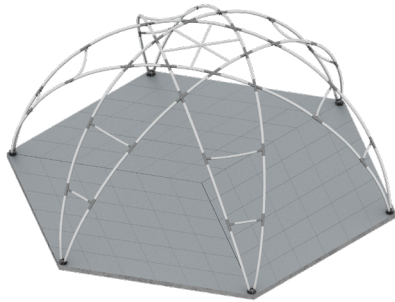
1.325 kg



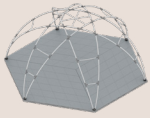
Structure Crossover excluded
Panels and baseboards can be full colour printed with your design.

Prices are in Euro and excluding VAT
Delivery – Ex Works Roosendaal The Netherlands
Payment conditions 50% by order and 50% before collection

DECKING FOR HEXADOME M



SET | Decking for Hexadome M



Decking frame with Rhombus panels and baseboards

Excl. Hexadome M Structure

€ 26.669,00

Contents

100 m² frame 99 panels 6 panels 3 panels 3x transportbox



Ballast



Optional ballast inside decking

Set for Hexadome M

24x ballast profile of 8 kg each
120x ballast plate of 25 kg each

€ 11.421,00

Total weight

3.187 kg

We advise to close the Creative Structure with sidewalls in the event of heavy winds.

Transport packaging

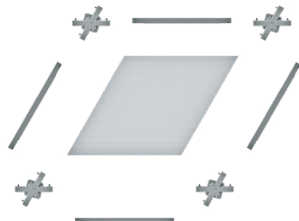
Dimensions (LxWxH)

3x 120x180x209 cm

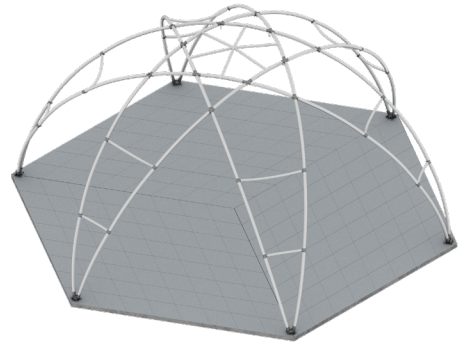
Weight

2.202 kg

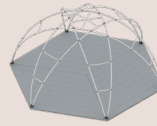
94 cm
15 cm
100 cm



DECKING FOR HEXADOME L



SET | Decking for Hexadome L



Decking frame with Rhombus panels and baseboards

Excl. Hexadome L Structure

€ 45.175,00

Contents

175 m² frame 183 panels 6 panels 3 panels 4x transportbox



Ballast



Optional ballast inside decking

Set for Hexadome L

48x ballast profile of 8 kg each
240x ballast plate of 25 kg each

€ 22.841,00

Total weight

6.375 kg

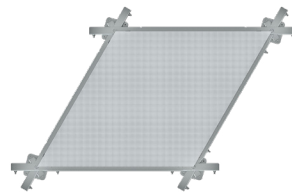
We advise to close the Creative Structure with sidewalls in the event of heavy winds.

Transport packaging

Dimensions (LxWxH)

4x 120x180x222 cm
1x 120x180x215 cm (only panels)

72 cm
15 cm
135 cm



Structure Hexadome excluded
Panels and baseboards can be full colour printed with your design.

Prices are in Euro and excluding VAT
Delivery - Ex Works Roosendaal The Netherlands
Payment conditions 50% by order and 50% before collection

GENERAL CONDITIONS

Our General Conditions, as filed at the Chamber of Commerce in Rotterdam, are applicable to all offers, quotations and all contracts between the user and a client to which the user has stated that these conditions are applicable, in so far as the parties have not made any specific written agreements to the contrary. A copy of the conditions can be send on request.

Creative Structures B.V.
Register of Companies 24473961

Retention of Title
The goods remain property of Creative Structures until complete payment of the purchase price.

All specific product conditions and amounts stated in this brochure are subject to change, and no liability is accepted for printing errors.